

□ **COËNT,Chantal** 1399
 ■ **MAURIER,Paul** 1100
 TOURNOI INTERNE CEN 2015 (7)
 [Fritz 13 (25m)]

C42: Défense russe (ou Petroff)

1.e2-e4 e7-e5 2.Cb1-c3 Cg8-f6
3.d2-d3 Ff8-b4 4.Fc1-d2 Cb8-c6
5.Ff1-e2 d7-d6 6.Cg1-f3 0-0

[6...h7-h6 7.h2-h3 Fc8-e6 8.a2-a3
 Fb4-a5 9.Cc3-a4 Fa5xd2+
 10.Dd1xd2 Dd8-d7 11.Ca4-c3 d6-d5
 12.e4xd5 Cf6xd5 13.Cc3xd5
 Dd7xd5 14.Dd2-e3 0-0 15.0-0
 Tf8-e8 16.Ta1-c1 Ta8-d8 17.Cf3-h2
 Dd5-b5 18.b2-b3 Db5-a5 19.Fe2-f3
 Cc6-d4 20.a3-a4 c7-c6 21.Ff3-d1
 Trejbal,S (2139)-Vanka,M (2194)
 Czechia 2007 0-1 (51)]

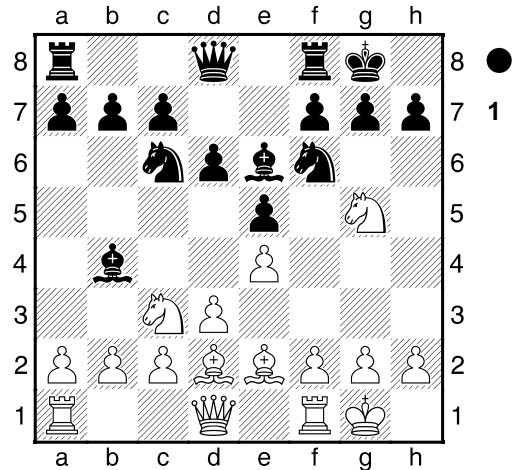
7.0-0 Fc8-e6

[7...Cc6-d4 8.Cf3xd4 e5xd4
 9.Cc3-d5 Cf6xd5 10.e4xd5 Fb4xd2
 11.Dd1xd2 b7-b6 12.h2-h3 Fc8-b7
 13.Fe2-f3 c7-c5 14.c2-c4 a7-a6
 15.a2-a3 b6-b5 16.Tf1-e1 Tf8-e8
 17.Te1xe8+ Dd8xe8 18.Ta1-e1
 De8-d7 19.Ff3-g4 Dd7-d8 20.Dd2-f4
 Fb7-c8 21.Fg4-h5 g7-g6 22.Fh5-g4
 Emhemed,H-Khalifah,Z Kemer 2007
 0-1 (41)]

8.Cf3-g5N Diagramme

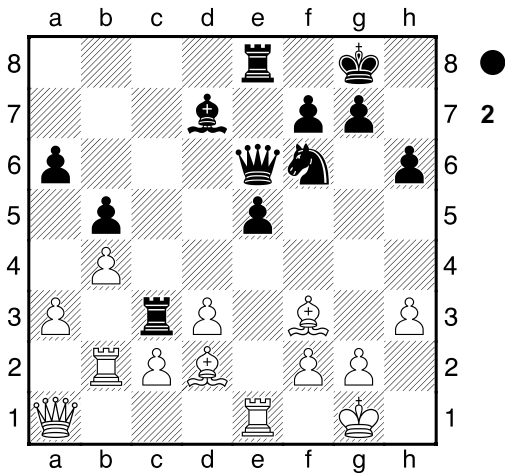
[8.a2-a3 Fb4-c5 9.Fd2-g5 Tf8-e8
 10.Dd1-d2 h7-h6 11.Fg5-e3 Fc5xe3
 12.Dd2xe3 Cf6-g4 13.De3-c1
 Dd8-d7 14.Cc3-b5 a7-a6 15.Cb5-c3
 Ta8-d8 16.h2-h3 Cg4-f6 17.Cc3-a4
 Fe6xh3 18.g2xh3 Dd7xh3
 19.Dc1-e3 Cf6-h5 20.Cf3-e1 Ch5-f4
 21.De3xh3 Cf4xh3+ 22.Rg1-h1
 Cc6-d4 Rotermann,L-Kolthoff,C (786)
 Germany 2006 ½-½ (46)]
 [8.a2-a3 Fb4-a5=]

(Diagramme 1)



8...Fe6-d7 9.a2-a3 Fb4-c5 10.h2-h3
 [10.Cc3-a4 Fc5-b6=]
10...h7-h6 11.Cg5-f3 Cc6-d4
 [11...a7-a5 12.Cc3-a4]
12.Cf3xd4= Fc5xd4 13.Ta1-b1 b7-b5
 [13...Fd7-e6 14.Fe2-f3=]
14.Fe2-f3= Tf8-e8 15.Cc3-e2 Fd4-c5
 [15...Fd4-b6 16.Fd2-c3=]
16.b2-b4
 [16.Fd2-a5 Dd8-c8=]
16...Fc5-b6 17.Ce2-c3 c7-c6
 [17...a7-a6 18.Dd1-e1]
18.Tf1-e1
 [18.a3-a4=]
18...d6-d5??
 [18...a7-a5]
19.e4xd5± c6xd5 20.Cc3xd5 Ta8-c8
21.Cd5xb6 Dd8xb6
 [21...a7xb6 22.Fd2-c1 Fd7-c6
 23.Ff3xc6 Tc8xc6 24.Fc1-b2±]
22.Fd2-e3± Db6-e6
 [22...Db6-a6 23.Fe3-c1±]
23.Tb1-b2
 [23.Fe3xa7 Fd7-c6 24.Fa7-d4
 De6-f5 25.Ff3xc6 Tc8xc6±]
23...Tc8-c3
 [23...a7-a6 24.Tb2-b3±]
24.Dd1-a1
 [24.Fe3-d4 Tc3xa3 25.Te1xe5±]
24...a7-a6?
 [24...Tc3-c8 25.Fe3xa7 Fd7-c6
 26.Ff3xc6 De6xc6 27.Fa7-c5±]
25.Fe3-d2?? Diagramme

[\triangle 25.Fe3-d4! Tc3-c8 26.Te1xe5+-]



25...Tc3-c7

[25...Tc3-c8 26.a3-a4±]

26.Da1-d1

[26.c2-c4 De6-f5 27.Fd2-c3
Fd7-c6±]

26...Fd7-c6± 27.Ff3xc6

[27.Fd2-e3 Tc7-c8±]

27...Tc7xc6 28.Dd1-b1

[28.a3-a4 e5-e4 29.a4xb5 a6xb5±]

28...Te8-d8

[28...De6-d7 29.Tb2-a2=]

29.Te1-e3

[29.Tb2-a2 De6-d5±]

29...Td8-d4

[29...Cf6-d5 30.Te3-e4=]

30.Te3-g3

[30.Db1-e1!? De6-c8 31.Te3-g3±]

30...Cf6-h5= 31.Tg3-e3 De6-f5

[31...Ch5-f4 32.Db1-f1±]

32.Te3-f3

[32.Db1-e1 Tc6-g6±]

32...Df5-g6

[32...Df5-d7 33.Db1-e1 e5-e4
34.Tf3-e3±]

33.c2-c3

[33.Db1-d1 f7-f5±]

33...Td4-h4

[\triangle 33...Td4-d5=]

34.d3-d4??

[\triangle 34.Db1-f1±]

34...e5-e4+ 35.Tf3-e3 Tc6-e6??

[\triangle 35...Ch5-f4 36.Te3-g3 Cf4-e2+
37.Rg1-h2 Ce2xg3 38.f2xg3
Th4-h5+-]

36.Db1-f1

[\triangle 36.Rg1-f1±]

36...Ch5-f4

[\triangle 36...f7-f5 37.d4-d5 Te6-f6±]

37.Te3-g3± Dg6-f5 38.Fd2xf4 Df5xf4

[38...Th4xf4 39.Tg3-e3±]

39.Tb2-e2

[39.Tb2-a2 Df4-f5±]

39...f7-f5

[39...Df4-d6 40.Df1-b1±]

40.Te2-e3

[\triangle 40.c3-c4 Df4-d6 41.d4-d5±]

40...g7-g5??

[40...Df4-d6 41.Df1-e1±]

41.Df1-d1??

[\triangle 41.Tg3-f3! Df4-d6 42.Tf3xf5+-]

41...Df4-c7

[\triangle 41...Df4-d6 42.Te3-e1 Rg8-g7±]

42.Dd1-d2

[\triangle 42.Dd1-b3 Dc7-f7 43.Te3-e1±]

42...f5-f4± 43.Dd2-a2 Dc7-d7??

[\triangle 43...Dc7-f7 44.Te3-e2 f4xg3
45.f2xg3 Th4-h5±]

44.Tg3xg5+

[\triangle 44.Te3xe4! Rg8-f7 45.Tg3-g4+-]

44...h6xg5+- 45.d4-d5

[45.Te3xe4 Rg8-f7 46.Te4-e5+-]

45...Te6-e5

[45...Te6-e5 46.Te3-e1 f4-f3+-]

0-1