

□ NOULET, Jérémy 1948

■ GENEREAU, Thierry 1851

TOURNOI INTERNE CEN 2015 (7)

[Fritz 13 (25m)]

A35: Ouverture anglaise (variante symétrique avec 2...Cc6)

1.d2-d4 g7-g6 2.c2-c4 Ff8-g7

3.Cb1-c3 c7-c5 4.Cg1-f3 c5xd4

5.Cf3xd4 Cb8-c6 6.e2-e3 Cg8-f6

7.Ff1-e2 0-0 8.0-0 Cc6xd4 9.Dd1xd4

d7-d6 10.Dd4-h4 Fc8-d7N

Diagramme

[ 10...Fc8-e6 11.Tf1-d1 ( 11.Fc1-d2 )

11...Dd8-b6 ( 11...Ta8-c8 12.Fc1-d2

Cf6-d7 13.b2-b3 f7-f5 14.Ta1-c1

Cd7-f6 15.Fe2-f3 Dd8-d7 16.e3-e4

f5xe4 17.Cc3xe4 b7-b5 18.c4xb5

Dd7xb5 19.Ce4-g5 Fe6-f5

20.Fd2-c3 h7-h6 21.Fc3xf6 Tc8xc1

22.Td1xc1 Tf8xf6 23.Cg5-e4 Tf6-f7

24.Ce4-g3 Ff5-d3 25.Dh4-g4

Db5-e5 26.Tc1-d1 Roos, L (2370)-

Conquest, S (2563) France 2000 0-1

(36); 11...Dd8-c7 12.Fc1-d2 Tf8-c8

13.Ta1-c1 a7-a6 14.b2-b3 Ta8-b8

15.e3-e4 Dc7-c5 16.Fd2-e3 Dc5-a3

17.Fe3-a7 Tb8-a8 18.Fa7-d4

Da3-a5 19.g2-g4 b7-b5 20.g4-g5

Cf6-d7 21.Fd4xg7 Rg8xg7

22.Td1-d4 b5xc4 23.b3xc4 Ta8-b8

24.Tc1-c2 Cd7-e5 25.Rg1-g2

Ce5xc4 26.Cc3-d5 Soloviova, E

(2098)-Grabarczyk, B (2437)

Grodzisk Mazowiecki 2007 1-0 (47) )

12.Ta1-b1 Db6-c5 13.b2-b4 Dc5-f5

14.e3-e4 Df5-e5 15.Tb1-b3 Fe6-d7

16.f2-f4 De5-e6 17.f4-f5 g6xf5

18.e4xf5 De6xf5 19.Fc1-g5 h7-h6

20.Fg5xh6 Df5-h7 21.Fh6-g5

Dh7xh4 22.Fg5xh4 Fd7-e6

23.Fh4xf6 e7xf6 24.Cc3-d5 Tf8-d8

25.Tb3-f3 Naranja, R-Fischer, R Palma de Mallorca 1970 ½-½ (48) ]

[ 10...Cf6-d7 11.e3-e4 Tf8-e8

12.Cc3-d5 Cd7-f6 13.Cd5-c3 Fc8-d7

14.Fc1-e3 Fd7-c6 15.Tf1-d1 Dd8-c8

16.Ta1-c1 b7-b6 17.Cc3-d5 Dc8-b7

18.b2-b3 Cf6xe4 19.Dh4xe4 e7-e6

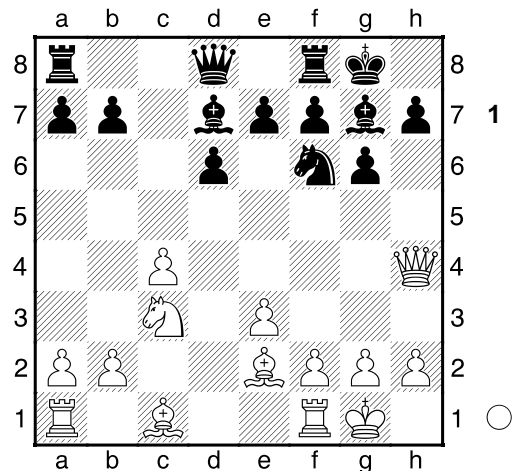
20.De4-d3 e6xd5 21.c4xd5 Fc6-d7

22.Dd3-a6 Db7xa6 23.Fe2xa6

Fd7-c8 24.Fa6-b5 Fc8-g4

25.Fb5xe8 Prameshuber, A-Teboudi, K Nice 1974 1-0 ]

[ 10...Fc8-e6 11.Fc1-d2= ]



11.e3-e4 Fd7-c6 12.Fc1-g5 h7-h6

[ 12...Tf8-e8 13.Fe2-f3= ]

13.Fg5xh6± Fg7xh6 14.Dh4xh6

Cf6xe4 15.Fe2-d3

[ 15.Cc3xe4 Fc6xe4 16.b2-b3 e7-e5± ]

15...Ce4xc3 16.b2xc3 e7-e5

17.Ta1-e1 Diagramme

[ 17.Fd3xg6 f7xg6 18.Dh6xg6+

Rg8-h8 19.Dg6-h6+ Rh8-g8

20.Dh6-g6+ Rg8-h8 21.Dg6-h6+

Rh8-g8 22.Dh6-g6+= ]

(Diagramme 2)

17...Dd8-f6̄ 18.h2-h4

[ 18.Fd3-e4 Ta8-c8̄ ]

18...Ta8-e8

[ 18...Df6-g7 19.Dh6-e3̄ ]

19.Fd3-e4= Df6-f4

[ 19...Fc6xe4 20.Te1xe4 Te8-e6

