

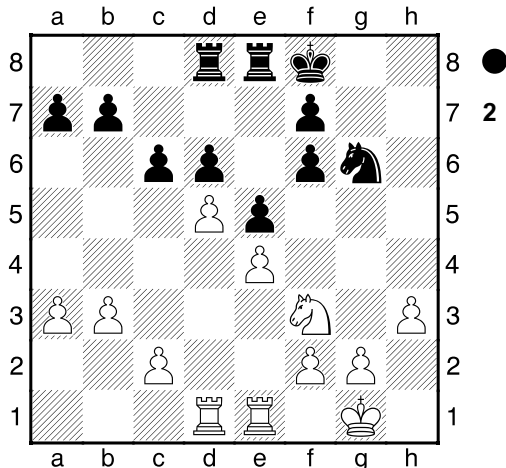


**16.Ce2-g3**

[ 16.d4-d5± ]

**16...Cc8-e7??**[ Δ16...e5xd4 17.Cg3-f5 Cc8-e7  
18.Cf5xd4 c6-c5∓ ]**17.Cg3-h5± Ce7-g6?**

[ Δ17...Rg8-h7!± ]

**18.Ch5xf6+- g7xf6 19.Dd2xh6****Dc7-e7 20.Ta1-d1**[ 20.d4xe5 f6xe5 21.Ta1-d1  
De7-f6+- ]**20...De7-f8**[ 20...d6-d5 21.d4xe5 f6xe5  
22.e4xd5 Td8xd5 23.Cf3-g5+- ]**21.Dh6xf8+**[ 21.Dh6-e3!? d6-d5 22.d4xe5 f6xe5  
23.De3xa7 d5xe4 24.Td1xd8  
Te8xd8+- ]**21...Rg8xf8 22.d4-d5** Diagramme[ 22.c2-c4 d6-d5 23.c4xd5 c6xd5  
24.d4xe5 Cg6xe5 25.Cf3xe5  
Te8xe5 26.e4xd5 Td8xd5  
27.Td1xd5 Te5xd5+- ]**22...Cg6-f4**[ 22...c6xd5 23.Td1xd5 Cg6-f4  
24.Td5-d2± ]**23.Cf3-h4**

[ Δ23.g2-g3 Cf4-g6 24.h3-h4+- ]

**23...Rf8-e7?**[ 23...c6xd5 24.g2-g3 Cf4-g6  
( 24...Cf4xh3+? 25.Rg1-g2 Ch3-g5  
26.Td1xd5+- ) 25.Ch4xg6+ f7xg6

26.Td1xd5 Rf8-e7± ]

**24.Ch4-f5+**[ 24.d5xc6 b7xc6 25.Ch4-f5+ Re7-f8  
26.Cf5xd6 Te8-e7+- ]**24...Re7-d7 25.Cf5-h6**[ 25.d5xc6+ Rd7xc6 26.h3-h4  
d6-d5+- ]**25...Rd7-e7??**[ 25...c6xd5! 26.g2-g3 Cf4xh3+  
27.Rg1-g2 d5-d4± ]**26.Ch6-f5+**[ 26.d5xc6 b7xc6 27.Ch6-f5+ Re7-f8  
28.Cf5xd6 Te8-e7+- ]**26...Re7-d7 27.Rg1-h2**

[ Δ27.d5xc6+ Rd7xc6 28.h3-h4+- ]

**27...Te8-g8?**

[ 27...Td8-c8+- ]

**28.g2-g3 Cf4-g6 29.Rh2-g2**[ 29.d5xc6+ Rd7xc6 30.Te1-e3  
Rc6-b6+- ]**29...Tg8-h8??**

[ Δ29...c6xd5! 30.e4xd5 b7-b5± ]

**30.Te1-h1**[ 30.d5xc6+ Rd7xc6 31.Te1-e3  
Rc6-c7+- ]**30...Th8-h7?**

[ 30...Td8-c8 31.h3-h4+- ]

**31.Th1-h2**[ Δ31.d5xc6+ Rd7xc6 32.Td1-d2  
d6-d5+- ]**31...Td8-h8??**

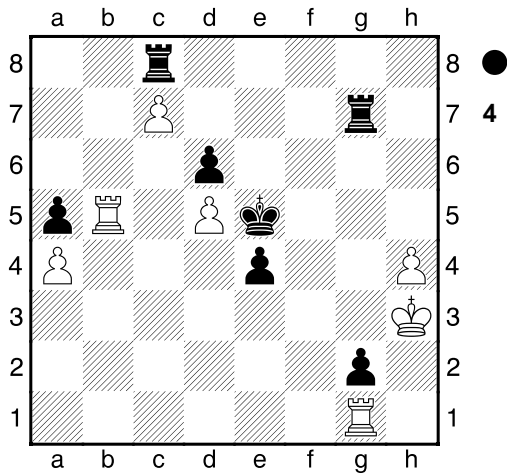
[ 31...Td8-c8+- ]

**32.Td1-h1**[ Δ32.d5xc6+ b7xc6 33.Td1xd6+  
Rd7-c7 34.Td6xf6+- ]**32...c6xd5± 33.e4xd5** Diagramme[ 33.Th1-d1 d5-d4 34.c2-c3 d6-d5  
35.c3xd4 d5xe4 36.d4xe5+ Rd7-e6  
37.Cf5-d4+ Re6xe5 38.f2-f4+  
Re5-d6± ]

(Diagramme 3)

**33...Cg6-e7**



**56...e4-e3??**

[ 56...Tc5-c7 57.Tb5-b1̄  
 ( 57.Tb5xa5? Tc7-g7+ 58.Rg2-f2  
 Tg7-h7̄ ) ]

**57.h5-h6**

[ Δ57.Tb5xc5 d6xc5 58.h5-h6+- ]

**57...Tc5-c2+= 58.Rg2-f3**

[ 58.Rg2-g3 Tc2-c1 59.Tb5-b2  
 Tc1-h1= ]

**58...e3-e2**

[ 58...Re5-d4!? 59.h6-h7  
 ( 59.Tb5xa5? Tc2-f2+ 60.Rf3-g3  
 Tf2-f6-+ ) 59...Tc2-h2 60.Tb5-b7̄ ]

**59.Rf3-f2= e2-e1D+ 60.Rf2xe1**

Tc2-h2 61.Tb5xa5 Th2xh6

62.Re1-d2 Th6-h4 63.Rd2-c3 Th4-d4

64.Rc3-b3 Td4xd5 65.Ta5xd5+

Re5xd5 66.Rb3-b4 Rd5-c6 67.a4-a5

Rc6-b7 68.Rb4-b5 Rb7-a7

1/2-1/2