

□ **CHALAND,Jérémie** 1700
 ■ **GENEREAU,Thierry** 1855
 TOURNOI INTERNE CEN 2015 (6)
 [Fritz 13 (25m)]

B13: Défense Caro-Kann (variante d'échange)

1.e2-e4 c7-c6 2.d2-d4 d7-d5
3.e4xd5 c6xd5 4.Ff1-d3 Cb8-c6
5.c2-c3 Dd8-c7 6.Fc1-g5 Cg8-f6
7.Dd1-b3N Diagramme

[7.Cb1-d2 Fc8-g4

A) 8.Cg1-f3 e7-e6 9.Fg5-h4
 (9.0-0 Fg4-h5 10.Tf1-e1 Ff8-d6
 11.Dd1-a4 Cf6-d7 12.Fg5-h4
 Fh5-g6 13.Te1-e3 Fd6-f4
 14.Fh4-g3 Ff4xg3 15.h2xg3
 Fg6xd3 16.Te3xd3 0-0 17.Ta1-e1
 b7-b5 18.Da4-d1 Ta8-b8
 19.Dd1-e2 b5-b4 20.c3-c4 d5xc4
 21.Cd2xc4 Cc6-e7 22.Cc4-e5
 h7-h6 23.Td3-d1 Cd7-f6
 Zivkovic,M (2315)-Milanovic,V
 (2395) Yugoslavia 1994 ½-½ (41))

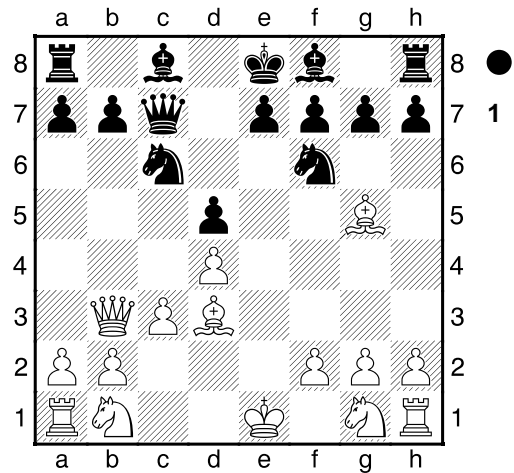
9...Ff8-d6 10.Fh4-g3 Fg4-h5
 11.Fg3xd6 Dc7xd6 12.0-0 0-0
 13.Tf1-e1 Ta8-b8 14.a2-a4
 Dd6-c7 15.Dd1-b1 a7-a6
 16.Cf3-e5 Tf8-e8 17.h2-h3 Fh5-g6
 18.Fd3xg6 h7xg6 19.Db1-d3
 Cc6xe5 20.d4xe5 Cf6-d7
 21.Dd3-d4 Te8-c8 22.Te1-e3
 Dc7-b6 Illescas Cordoba,M (2590)-
 Anand,V (2715) Linares 1994 0-1
 (40);

B) 8.Dd1-b3 e7-e6 9.Cg1-f3
 Ff8-d6 10.0-0 Fg4-h5 11.Tf1-e1
 Fh5-g6 12.c3-c4 Fg6xd3
 13.Db3xd3 d5xc4 14.Dd3xc4
 Cc6-b4 15.Fg5xf6 g7xf6
 16.Cd2-e4 Re8-e7 17.Dc4-b3
 Ta8-c8 18.a2-a3 Cb4-d5
 19.Ce4-c3 Cd5xc3 20.b2xc3
 Dc7xc3 21.Db3xb7+ Tc8-c7
 Ploetz,W (2250)-Wilde,P (2295)

Germany 1994 ½-½]

[7.h2-h3 h7-h6 8.Fg5-h4 Dc7-b6
 9.Dd1-b3 Cf6-h5 10.Cg1-e2 g7-g5
 11.Fh4-g3 Ch5xg3 12.Ce2xg3 e7-e6
 13.Cb1-d2 h6-h5 14.0-0 Fc8-d7
 15.Db3-d1 g5-g4 16.h3xg4 h5xg4
 17.b2-b4 Th8-h4 18.b4-b5 Cc6xd4
 19.c3xd4 Db6xd4 20.Cd2-b3
 Dd4-h8 21.f2-f4 Ff8-e7 Renner,C
 (2398)-Rogers,I (2593) Augsburg
 2005 0-1 (56)]

[7.Cg1-f3 h7-h6 8.Fg5-h4 Dc7-b6=]



7...e7-e6

[7...e7-e5!? 8.Cg1-e2 Fc8-e6=]

8.Cb1-d2= Ff8-d6

[8...Cf6-h5 9.Cg1-f3=]

9.Cg1-f3 0-0 10.Db3-c2

[10.Fg5xf6 g7xf6 11.0-0 Fc8-d7=]

10...h7-h6 11.Fg5-h4

[11.Fg5xf6 g7xf6 12.c3-c4 Tf8-d8=]

11...Cf6-h5 12.Fh4-g3 Ch5xg3

13.h2xg3 e6-e5

[13...f7-f6 14.Cf3-h4=]

14.d4xe5= Cc6xe5 15.0-0

[15.Cf3xe5 Fd6xe5 16.Cd2-f3
 Fe5-f6=]

15...Dc7-b6

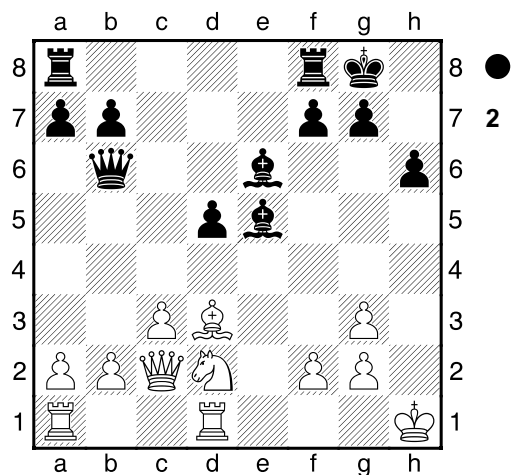
[15...Fd6-c5 16.Fd3-h7+ Rg8-h8
 17.Fh7-f5=]

16.Cf3xe5 Fd6xe5 17.Rg1-h1

[17.a2-a4 Fc8-d7=]

17...Fc8-e6 18.Tf1-d1? Diagramme

[18.Cd2-f3 Fe5-f6̄]



18...Ta8-c8

[Δ18...Db6xf2 19.Cd2-f3 Fe5xg3
20.Fd3-h7+ Rg8-h8 21.Dc2xf2
Fg3xf2-+]

19.Dc2-b3??

[Δ19.Cd2-f3 Fe5-f6 20.Dc2-d2̄]

19...Db6xf2-+

[19...Db6xf2 20.Cd2-f1 b7-b6-+]

0-1