

□ **NOULET, Jérémy** 1927

■ **HOCQUARD, Hervé** 1751

TOURNOI INTERNE CEN 2015 (5)

[Fritz 13 (25m)]

A35: Ouverture anglaise (variante symétrique avec 2...Cc6)

1.d2-d4 c7-c5 2.Cg1-f3 c5xd4

3.Cf3xd4 Cb8-c6 4.c2-c4 g7-g6

5.Cb1-c3 Ff8-g7 6.Cd4xc6 b7xc6

7.Fc1-f4N Diagramme

[7.Fc1-d2 Cg8-f6 8.e2-e3 0-0

9.Ff1-e2 Ta8-b8 10.b2-b3 d7-d5

11.0-0 Fc8-f5 12.Ta1-c1 Cf6-e4

13.Cc3xe4 Ff5xe4 14.c4xd5 c6xd5

15.Fe2-f3 Fe4xf3 16.Dd1xf3 e7-e6

17.g2-g3 Dd8-d6 18.Tc1-c2 Dd6-a6

19.Tf1-c1 h7-h5 20.Fd2-e1 Tf8-c8

21.Tc2xc8+ Tb8xc8 Lapadatu, T-

Djukanovic, M Pula 1972 ½-½ (61)]

[7.Dd1-a4 Dd8-b6 8.Fc1-d2 a7-a5

9.Da4-c2 Db6-a7 10.e2-e3 Cg8-f6

11.Ff1-e2 0-0 12.0-0 d7-d6

13.h2-h3 Cf6-d7 14.f2-f4 Cd7-c5

15.g2-g4 f7-f5 16.Rg1-h2 Ta8-b8

17.g4-g5 Cc5-e4 18.Fe2-d3 Ce4xd2

19.Dc2xd2 a5-a4 20.Ta1-c1 Fc8-e6

21.h3-h4 Da7-a5 Bjerke, R (2265)-

Ostenstad, B (2485) Gausdal 1995

0-1 (32)]

[7.Dd1-c2 Cg8-f6 8.e2-e4 d7-d6

9.Ff1-e2 0-0 10.0-0 Cf6-g4

11.h2-h3 Cg4-e5 12.Fc1-e3 Fc8-a6

13.b2-b3 Dd8-a5 14.Ta1-c1 Ce5-d7

15.Cc3-a4 c6-c5 16.Tc1-d1 Cd7-e5

17.Fe3-d2 Da5-c7 18.Ca4-c3

Ce5-c6 19.Cc3-d5 Dc7-b7 20.f2-f4

Cc6-d4 21.Dc2-d3 Cd4xe2+

Pedersen, J (2393)-Porsgaard, P

Esbjerg 2004 0-1 (40)]

[7.e2-e3 d7-d6 8.h2-h3 Cg8-f6

9.Ff1-e2 Dd8-c7 10.0-0 0-0

11.Fe2-f3 Fc8-b7 12.Ta1-b1 Cf6-d7

13.Fc1-d2 Cd7-e5 14.Ff3-e2 c6-c5

15.f2-f4 Ce5-d7 16.Cc3-b5 Dc7-d8

17.Dd1-e1 a7-a6 18.Fd2-a5 Dd8-c8

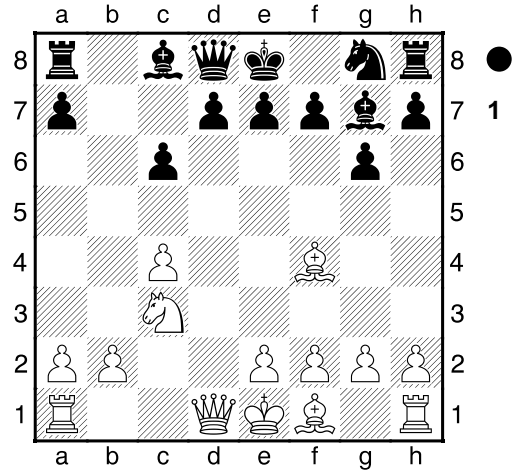
19.Cb5-c3 Cd7-b8 20.Cc3-d5

Fb7xd5 21.c4xd5 Cb8-d7

Weiland, K-Schaefer, G Saarburg

1995 ½-½ (37)]

[7.e2-e4 Dd8-a5 8.Fc1-d2 Cg8-f6=]



7...Dd8-a5

[7...d7-d6 8.e2-e4=]

8.Dd1-d2= d7-d6 9.e2-e4

[9.Ta1-c1 Ta8-b8=]

9...Ta8-b8̄ 10.Ta1-c1 Cg8-f6

[10...Fg7xc3 11.b2xc3 Cg8-f6

12.Ff1-d3̄]

11.Ff1-e2 Da5-b4

[11...Cf6-d7 12.0-0=]

12.b2-b3 0-0 13.0-0 Cf6-g4

[13...Cf6-d7 14.Cc3-a4=]

14.Fe2xg4 Diagramme

[14.c4-c5

A) 14...Db4xc5?? 15.Cc3-d5

Dc5-d4 16.Cd5xe7+ Rg8-h8

17.Dd2xd4 Fg7xd4 18.Ce7xc6

Fd4xf2+ 19.Tf1xf2 Cg4xf2

20.Ff4xd6 Cf2xe4 21.Fd6xf8+-

(21.Cc6xb8?! n'est pas possible.

Ce4xd6 22.Cb8-c6 Fc8-b7±);

B) 14...e7-e5 15.Ff4-g3 d6xc5±

(≤15...Db4xc5 16.Cc3-d5 c6xd5

17.Tc1xc5 d6xc5 18.Dd2xd5+-)]

(Diagramme 2)

39...Rh8-g8 40.De1-f1

[40.De1-g1 Dd4xg1+ 41.Rh1xg1
f5-f4+-]

40...Dd4-e4

[40...Dd4-e5 41.Rh1-g1+-]

41.Df1-g1

[41.Df1-f2 Ff7-e8+-]

41...Ff7-e8

[41...d6-d5 42.Dg1-c1 De4-e5
43.c4-c5+-]

42.Dg1xa7 De4-e1+ 43.Da7-g1**De1-d2**

[43...De1-e5+-]

44.Dg1-a1

[44.Dg1-a1 Dd2-c1+ 45.Da1xc1
Rg8-f7 46.Dc1-e3 f5-f4 47.g5-g6+
Rf7-f6 48.De3xf4+ Rf6-e7
49.Df4-e4+ Re7-d7 50.De4-b7+
Rd7-e6 51.Db7-c8+ Fe8-d7
52.Dc8-g8+ Re6-e5 53.Dg8-d5+
Re5-f6 54.Dd5-f7+ Rf6-e5
55.Fh6-g7+ Re5-e4 56.Df7-f3#]

1-0