

□ **FACHE, Jacques** 1399

■ **MORILLON, Jean-Michel** 1570

TOURNOI INTERNE CEN 14-15 (3)

[Houdini 4 Pro x64A (25m)]

B51: Défense sicilienne (attaque Canal-Sokolsky)

1.e2-e4 c7-c5 2.Cg1-f3 d7-d6

3.Ff1-b5+ Cb8-d7 4.a2-a4 a7-a6

[4...g7-g6 5.0-0 Ff8-g7 6.Tf1-e1

Cg8-f6 7.Cb1-c3 0-0 8.d2-d3

Cf6-g4 9.Fb5xd7 Fc8xd7 10.h2-h3

Cg4-e5 11.Cf3xe5 Fg7xe5

12.Fc1-h6 Tf8-e8 13.Dd1-d2 Fd7-c6

14.Cc3-d1 Dd8-d7 15.a4-a5 Ta8-d8

16.c2-c4 e7-e6 17.Fh6-g5 f7-f6

18.Fg5-e3 d6-d5 19.f2-f4

Leenhouts, K (2387)-Gharamian, T (2676) Belgium 2011 0-1 (44)]

[4...e7-e5 5.Cb1-c3 Cg8-f6 6.d2-d3

h7-h6 7.0-0 g7-g6 8.Cf3-d2 Ff8-g7

9.a4-a5 0-0 10.Cd2-c4 Cd7-b8

11.f2-f4 0-1 (11) Pelitov, D (2112)-

Nevednichy, V (2542) Plovdiv 2013]

5.Fb5-c4 Cg8-f6 6.Cb1-c3N

Diagramme

[6.Dd1-e2 e7-e6 7.0-0 Ff8-e7

8.Cb1-c3 0-0 9.a4-a5 Cd7-b8

10.e4-e5 Cf6-e8 11.e5xd6 Ce8xd6

12.d2-d4 c5xd4 13.Cf3xd4 e6-e5

14.Cd4-b3 Cd6xc4 15.De2xc4

Fc8-e6 16.Dc4-e4 Cb8-c6 17.Tf1-d1

Fe7-d6 18.Cb3-c5 Dd8-c7

19.Cc5xe6 f7xe6 20.Fc1-e3 Fd6-b4

Hansen, G (2295)-Ostner, M

Copenhagen 1996 1-0 (39)]

[6.d2-d3 h7-h6±]

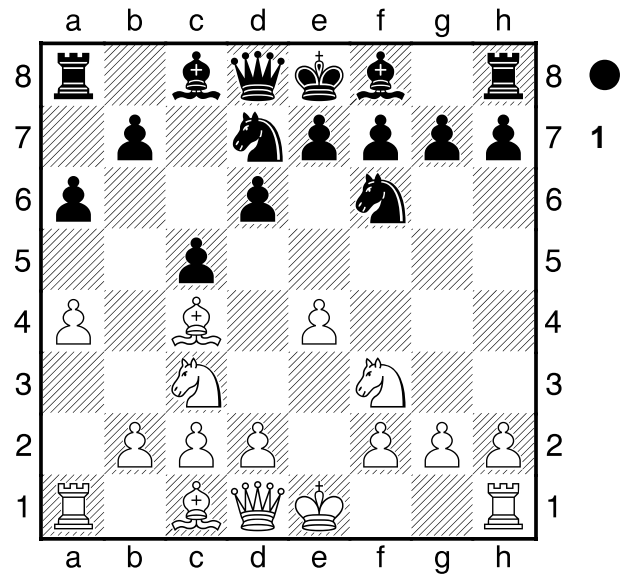
(Diagramme 1)

6...g7-g6

[6...e7-e6 7.b2-b3=]

7.Cf3-g5

[7.d2-d3 Ff8-g7=]



7...e7-e6 Sécurise d5

[7...Cd7-e5 8.Fc4-b3 Dd8-a5
9.d2-d3=]

8.d2-d3 Cd7-e5 9.Fc4-b3

[9.Fc1-f4 Dd8-a5 10.Fc4-b3
Fc8-d7=]

9...Ff8-g7 10.f2-f4

[10.0-0 0-0=]

10...Ce5-c6 11.f4-f5

[11.0-0 h7-h6 12.Cg5-f3 Dd8-b6=]

11...Cc6-d4

[11...g6xf5 12.e4xf5 h7-h6
13.Cg5-h3̄ (≤13.f5xe6 h6xg5
14.e6xf7+ Re8-f8 15.Fc1xg5
Cc6-d4̄)]

12.f5xe6= Cd4xe6

[12...f7xe6!? 13.Fb3-a2 h7-h6=]

13.0-0 0-0 14.Cg5xe6

[14.a4-a5 Rg8-h8±]

14...Fc8xe6= 15.Fb3xe6

[15.Fc1-g5 h7-h6 16.Fg5-h4
Fe6xb3 17.c2xb3 Tf8-e8=]

15...f7xe6 16.Fc1-g5

[16.g2-g3 b7-b6=]

16...Dd8-b6̄ 17.Ta1-b1 Tf8-f7

[17...Cf6-d7 18.Fg5-f4̄]

18.Dd1-e2

[18.Fg5-e3 Db6-c7̄]

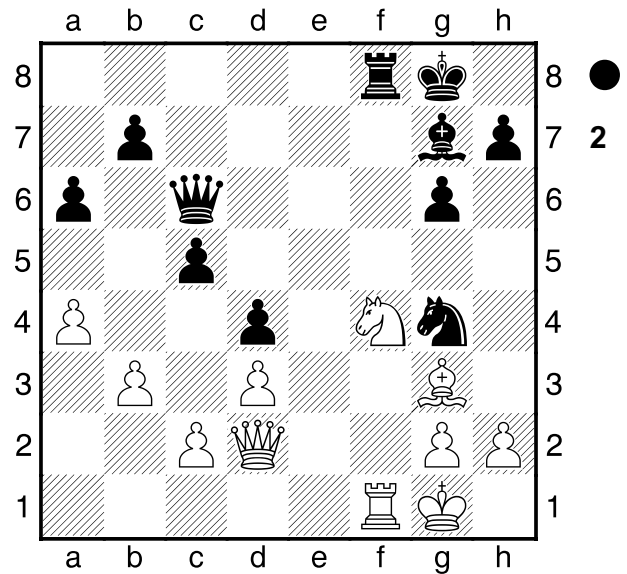
18...Ta8-f8̄ 19.Fg5-e3

[19.Rg1-h1 Cf6-d7 20.Tf1-e1

h7-h5 \bar{f}]
19...Cf6-d7
 [19...Db6-b4! \bar{f}]
20.Tf1xf7 \bar{f} Tf8xf7 21.De2-d2
 [21.Cc3-d1 h7-h5 \bar{f}]
21...Tf7-f8
 [21...Db6-b4! \bar{f}]
22.Cc3-e2 Db6-c6
 [22...d6-d5=]
23.Ce2-f4
 [23.a4-a5 Fg7-e5=]
23...d6-d5
 [23...Dc6xa4 24.b2-b3
 (24.Cf4xe6?? ce Pion est mortel
 pour les Blancs. Da4-a2 25.Tb1-d1
 Da2xe6-+) 24...Da4-a2 25.Tb1-c1 \bar{f}]
24.e4xd5 \bar{f} e6xd5 25.b2-b3??
 [\triangle 25.d3-d4 r siste davantage. c5-c4
 26.b2-b3 \bar{f}]
25...d5-d4-+ 26.Fe3-f2 Cd7-e5
 [\triangle 26...Fg7-h6 et les Noirs ont atteint
 leur but. 27.Ff2-g3 Dc6-f6-+]
27.Ff2-g3 Ce5-g4 28.Tb1-f1?
 Diagramme
 [28.Cf4-h3 Cg4-e3 29.Ch3-g5
 Dc6-d5 \bar{f}]

(Diagramme 2)

28...Fg7-h6
 [\triangle 28...Cg4-e3!? 29.Tf1-e1
 Fg7-h6-+]
29.Dd2-e2 \bar{f} Cg4-e3 30.Tf1-f3
 [30.Tf1-f2 Tf8-e8 31.De2-f3 Dc6xf3
 32.g2xf3 b7-b6 \bar{f}]
30...Tf8-e8
 [30...g6-g5 31.Cf4-h5 Tf8xf3
 32.De2xf3 Dc6xf3 33.g2xf3 \bar{f}]
31.h2-h3
 [31.a4-a5 Dc6-b5 \bar{f}]
31...Ce3-f5
 [31...b7-b5 32.a4-a5 \bar{f}]
32.De2-f2
 [32.De2-f1 b7-b5 \bar{f}]



32...Te8-e3
 [32...b7-b5 33.a4xb5 a6xb5
 34.Rg1-h1 \bar{f}]
33.Cf4-e2
 [33.Tf3xe3 d4xe3 34.Df2-e1
 Fh6-g5 \bar{f}]
33...Te3xf3
 [33...Dc6-e8 34.Rg1-f1 \bar{f}]
34.g2xf3?? Diagramme
 [\triangle 34.Df2xf3 Dc6xf3 35.g2xf3 \bar{f}]

(Diagramme 3)

la position  clate petit   petit.
34...Fh6-e3-+
 [34...Fh6-e3 35.Fg3-f4 Fe3xf2-+
 36.Rg1xf2 Dc6-e6-+]
0-1

