

□ LOUF, Claude 1638

■ LEMEUNIER, Clément 1470

TOURNOI INTERNE CEN 2015 (7)

[Fritz 13 (25m)]

C34: Gambit du Roi (gambit du Cavalier)

1.e2-e4 e7-e5 2.f2-f4 Cb8-c6

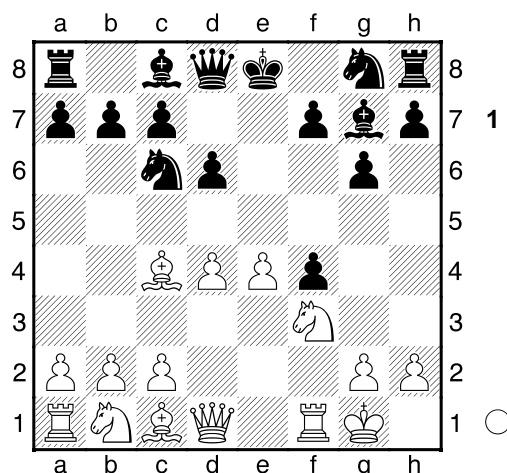
3.Cg1-f3 e5xf4 4.Ff1-c4 g7-g6

[4...g7-g5 5.h2-h4 g5-g4 6.Cf3-g5 Cc6-e5 7.Fc4-b3 h7-h6 8.Cg5xf7 Ce5xf7 9.Fb3xf7+ Re8xf7 10.Dd1xg4 d7-d6 11.Dg4xf4+ Dd8-f6 12.Df4-e3 Rf7-e8 13.Cb1-c3 c7-c6 14.b2-b3 Ff8-g7 15.Fc1-b2 Fc8-g4 16.Cc3-d1 Df6-e7 17.d2-d4 Fg4xd1 18.Ta1xd1 Cg8-f6 19.e4-e5 Takacs,L (2267)-Szell,L (2203) Hungary 2004 ½-½ ]

5.d2-d4 Ff8-g7 6.0-0 d7-d6N

Diagramme

[6...Cg8-e7 7.Cb1-c3 0-0 8.Fc1xf4 d7-d6 9.Dd1-d2 Tf8-e8 10.Ff4-h6 Fg7-h8 11.Dd2-f2 Fc8-g4 12.Fc4xf7+ Rg8xf7 13.Cf3-g5+ 1-0 (13) Grillon,A-Hyka,T Herceg Novi 2005 ]  
[ ♠6...g6-g5!?! = ]



7.Fc1xf4± Cg8-f6

[7...Fc8-g4 8.Ff4-e3 Cg8-f6± ]

8.Tf1-e1

[ ♠8.Cb1-c3!?! ± ]

8...0-0= 9.e4-e5

[ ♠9.Cb1-d2= ]

9...d6xe5 ♠ 10.d4xe5

[ 10.Cf3xe5 Dd8xd4+ 11.Dd1xd4 Cc6xd4 ♠ ]

10...Dd8xd1 11.Te1xd1 Cf6-h5

12.Ff4-e3

[ 12.Ff4-g5 Fc8-g4 ♠ ]

12...Cc6xe5 13.Cf3xe5 Fg7xe5

14.c2-c3

[ 14.Cb1-c3 Tf8-e8 15.Td1-e1 Fc8-e6 ♠ ]

14...Tf8-e8

[ 14...Ch5-f6 15.Fe3-c5 Fc8-g4 16.Td1-f1 ♠ ]

15.Fe3-h6

[ 15.Td1-f1 Fe5-f6 16.Fe3-h6 Fc8-e6 ♠ ]

15...Fc8-e6

[ 15...Ch5-g7 16.Cb1-a3+ ]

16.Fc4-e2

[ 16.Cb1-d2 Fe5-g7 17.Fh6xg7 Rg8xg7 ♠ ]

16...Fe5-f4 17.Fh6xf4 Ch5xf4

18.Fe2-f3 Ta8-d8 19.Td1xd8

[ 19.Cb1-d2 Fe6-d5+ ]

19...Te8xd8 20.Cb1-a3

[ 20.a2-a4 c7-c6+ ]

20...c7-c6

[ 20...Td8-d2 21.b2-b3 c7-c6

22.Ca3-c4 Fe6xc4 23.b3xc4+ ]

21.b2-b3

[ 21.Rg1-f2 g6-g5 22.Ta1-d1 Td8xd1 23.Ff3xd1 Cf4-d3+ 24.Rf2-e3 Cd3xb2+ ]

21...Td8-d3 22.c3-c4

[ 22.Ca3-c2+ ]

22...Cf4-h3+! 23.Rg1-f1

[ 23.g2xh3 Td3xf3 ]

23...Ch3-g5 24.Ff3-d1 Td3-c3

[ 24...Td3-d4 25.Rf1-e2+ ]

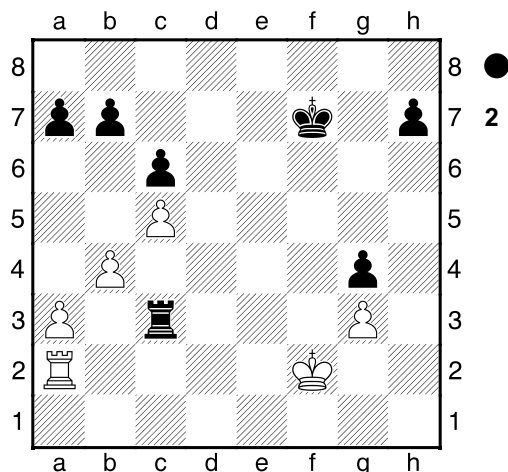
25.Ca3-c2 Tc3-d3 26.Cc2-e1?

[ ♠26.Cc2-a3 ♠ ]

26...Td3-d2+ 27.Ce1-f3 Cg5xf3

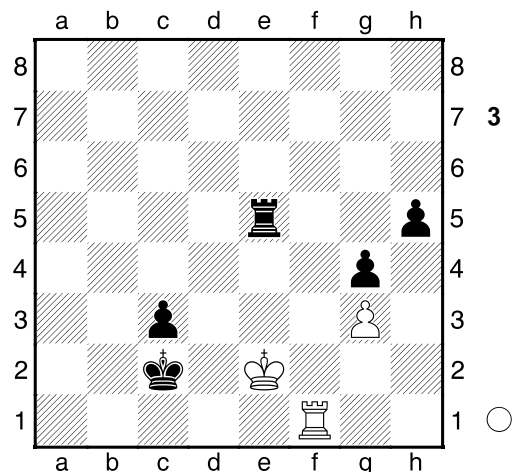
28.Fd1xf3 g6-g5 29.h2-h3 f7-f5

[ 29...Rg8-g7 30.Rf1-g1-+ ]  
**30.Ff3-e2**  
 [ Δ30.Ta1-d1 Td2xd1+ 31.Ff3xd1-+ ]  
**30...Rg8-f7 31.a2-a3**  
 [ 31.g2-g3 Rf7-f6-+ ]  
**31...Td2-b2 32.b3-b4 Tb2-c2**  
 [ 32...Rf7-f6 33.Ta1-d1 Tb2-a2  
 34.Td1-d8 Ta2xa3 35.Td8-b8-+ ]  
**33.c4-c5 Fe6-c4**  
 [ Δ33...Fe6-d5 34.Fe2-d3 Tc2xg2  
 35.Fd3xf5 h7-h5-+ ]  
**34.Fe2xc4+ 35.Tc2xc4 35.Ta1-a2**  
 [ 35.Ta1-d1 Tc4-f4+ 36.Rf1-g1  
 Rf7-e7 36 ]  
**35...g5-g4**  
 [ Δ35...Tc4-d4! 36 ]  
**36.h3xg4**  
 [ 36.Ta2-d2 Rf7-e7 37.Td2-d6  
 a7-a5 37 ]  
**36...f5xg4 37.Rf1-f2**  
 [ 37.Ta2-d2 Rf7-e7 37 ]  
**37...Tc4-c3 38.g2-g3** Diagramme  
 [ Δ38.Ta2-d2! 38 Rf7-e8 39.Td2-e2+  
 Re8-d8 40.Te2-d2+ Rd8-c8  
 41.Td2-e2 g4-g3+ 42.Rf2-e1 Tc3xa3  
 43.Te2-e8+ Rc8-d7 44.Te8-h8 38 ]



**38...h7-h5-+ 39.Rf2-g2 Tc3-d3**  
**40.Ta2-f2+ Rf7-g6 41.Tf2-a2 Td3-f3**  
 [ 41...Rg6-g5 42.Rg2-f2-+ ]  
**42.a3-a4**  
 [ 42.Rg2-h2 Tf3-c3-+ ]  
**42...Tf3-b3 43.b4-b5 c6xb5 44.a4xb5**

**Tb3xb5 45.Ta2xa7 Rg6-f5 46.Rg2-f2**  
**Rf5-e5**  
 [ 46...Rf5-e4 47.Rf2-f1-+ ]  
**47.c5-c6**  
 [ 47.Rf2-e3 Tb5-b3+ 48.Re3-f2  
 Re5-d5-+ ]  
**47...b7xc6 48.Ta7-e7+**  
 [ 48.Ta7-a8-+ ]  
**48...Re5-d4 49.Te7-d7+**  
 [ 49.Te7-f7 Tb5-b2+ 50.Rf2-f1 c6-c5  
 51.Tf7-d7+ Rd4-e3-+ ]  
**49...Tb5-d5 50.Td7-f7 c6-c5**  
**51.Rf2-e2 Rd4-c3 52.Tf7-h7**  
 [ 52.Tf7-c7 Td5-f5-+ ]  
**52...c5-c4 53.Th7-c7**  
 [ 53.Th7-a7-+ ]  
**53...Rc3-b3 54.Tc7-b7+ Rb3-c2**  
**55.Tb7-f7**  
 [ 55.Tb7-h7 c4-c3 56.Th7-h8  
 Td5-e5+ 57.Re2-f2 Rc2-d3-+ ]  
**55...c4-c3 56.Tf7-f1**  
 [ 56.Tf7-h7-+ ]  
**56...Td5-e5+** Diagramme  
 [ 56...Td5-e5+ 57.Re2-f2 Te5-f5+  
 58.Rf2-e1 Tf5xf1+ 59.Re1xf1  
 Rc2-d3 60.Rf1-f2 c3-c2 61.Rf2-g2  
 c2-c1D 62.Rg2-h2 Dc1-b2+  
 63.Rh2-g1 Rd3-e3 64.Rg1-h1  
 Re3-f3 65.Rh1-g1 Db2-g2# ]



0-1